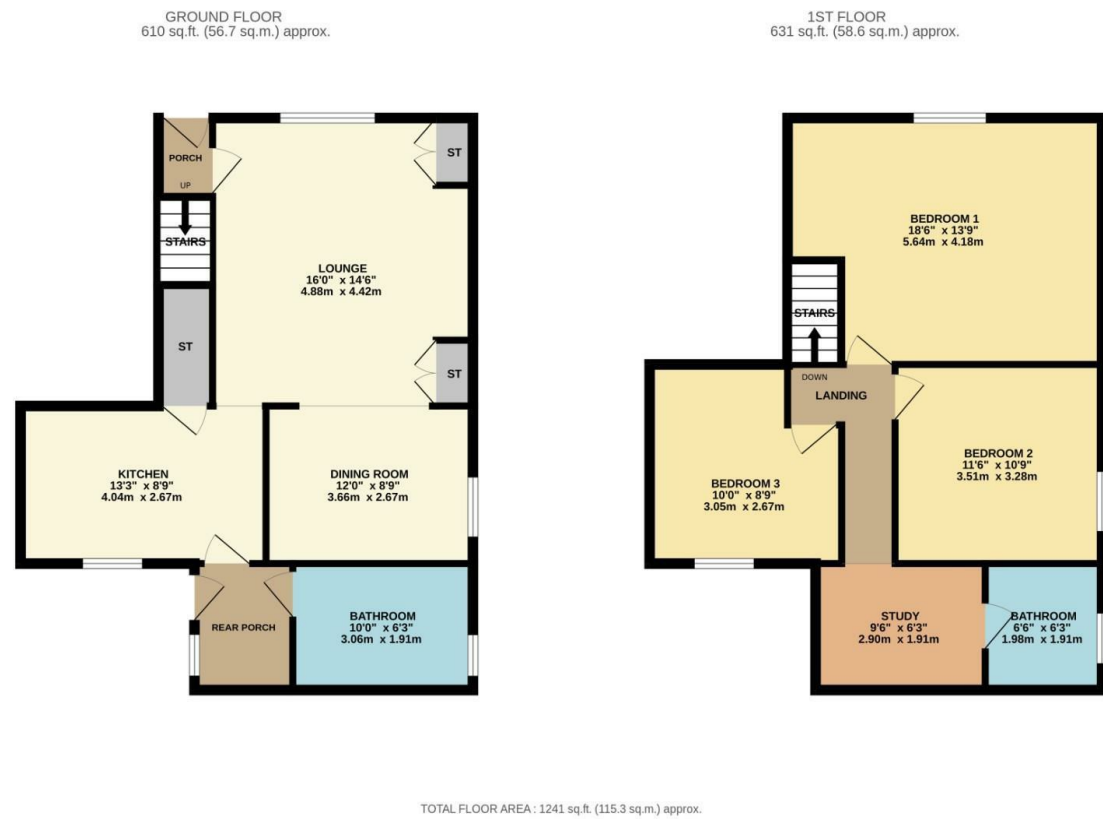
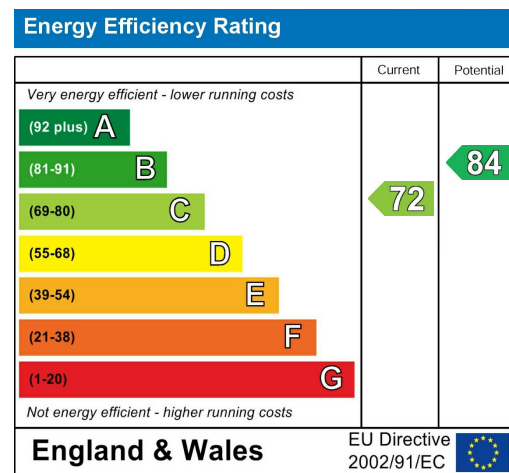


Floor Plan



Energy Performance Certificates



Directions

Proceed into Darley from the Harrogate side and pass the primary school. Shortly after, the property is easily found on the left hand side.

Council Tax Band C Tenure Freehold

Agents Notes

We do not set out to avoid our civil and criminal liabilities by using clever use of word or photography however it is not always possible for us to guarantee that everything in our sales material is accurate. We strongly recommend that prospective purchasers seek their own professional advice. No responsibility can be accepted for any expenses incurred by intending Purchasers. We do not check or guarantee the condition of appliances, services or equipment. Equally any verbal statement from our staff forms no point of a contract. If you require written confirmation on any point we will gladly assist.



£375,000

2 Prospect Row, Darley, Harrogate, HG3 2PZ

3 Bedroom House - Terraced

A charming three bedroomed stone cottage with spacious living accommodation located in this ever popular lower Nidderdale village. Internal inspection strongly recommended.



HOPKINSONS
ESTATE AGENTS

16 Princes Street, Harrogate, HG1 1NH
Telephone: 01423 501 201
info@hopkinsons.net

Description

With gas fired central heating and double glazed windows the property briefly comprises: entrance lobby, delightful lounge with a feature inset multi burning stove.

There is a separate dining area and a character kitchen with integrated appliances.

A rear entrance lobby leads to a spacious ground floor bathroom.

At first floor there are three bedrooms and a study area with access to a luxury shower room.

Outside there is allocated private parking and an enclosed patio garden.

Darley is a very popular village that features a primary school, bus stop, village shop/post office, cricket club and public house.

Harrogate is an approximate 15 minute journey by car away and features in excellent range of secondary schools, shopping, opportunities, Cafes and bars.

